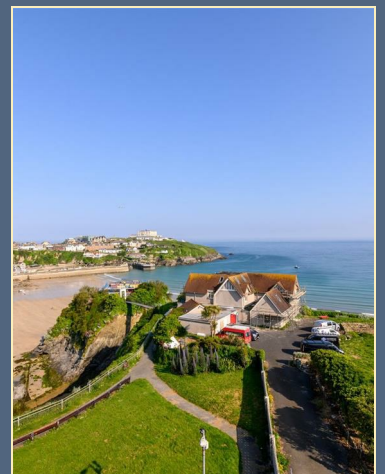




1 Island Reach Island Crescent, Newquay, TR7 1DZ

£885,000

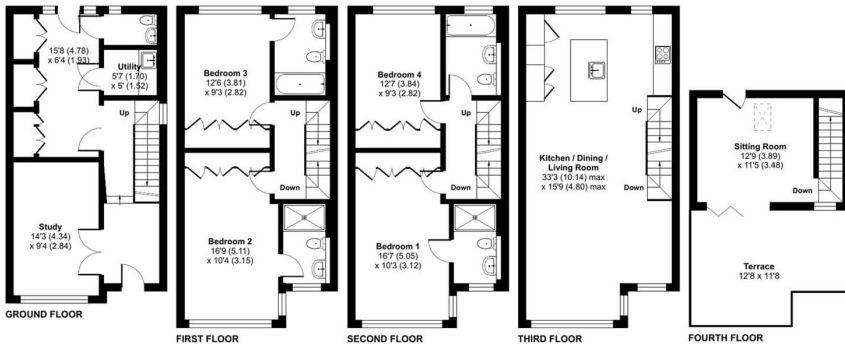
This highly specified and incredibly energy efficient Zero Carbon Smart townhouse enjoys sensational sea views and provides perfectly presented, light and spacious contemporary accommodation over five storeys. With a stunning roof terrace, gated secure parking and a coastal location just moments from Towan Beach - low maintenance seaside living doesn't get much better.



SHORE
PARTNERSHIP

Floor Plan

1 Island Reach, Island Crescent, Newquay, TR7 1DZ
 Main House = 2190 sq ft / 203.5 sq m
For identification only - Not to scale

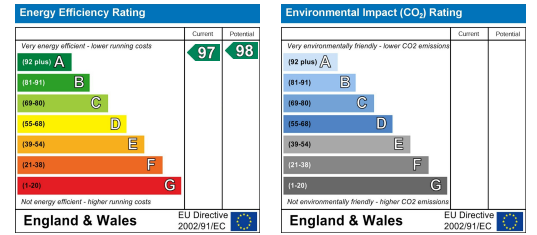


RICS Certified Property Measurer
 Floor plan produced in accordance with RICS Property Measurement Standards incorporating International Property Measurement Standards (IPMS Residential). ©richscom 2024. Produced for Shore Partnership Limited. REF: 1139810

Area Map



Energy Efficiency Graph



IMPORTANT NOTICE Shore Partnership, their clients and any joint agents give notice that: 1. They are not authorised to make or give any representations or warranties in relation to the property either here or elsewhere, either on their own behalf or on behalf of their client or otherwise. They assume no responsibility for any statement that may be made in these particulars. These particulars do not form part of any offer or contract and must not be relied upon as statements or representations of fact. 2. Any areas, measurements or distances are approximate. The text, images and plans are for guidance only and are not necessarily comprehensive. It should not be assumed that the property has all necessary planning, building regulation or other consents and Shore Partnership has not tested any services, equipment or facilities. Purchasers must satisfy themselves by inspection or otherwise.