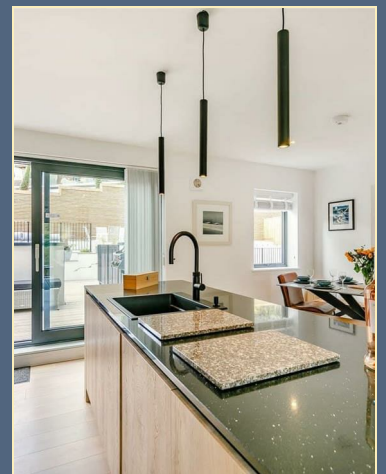




Pukoo's Nest 2 Tides Reach, Newquay, TR7 2FU

£695,000

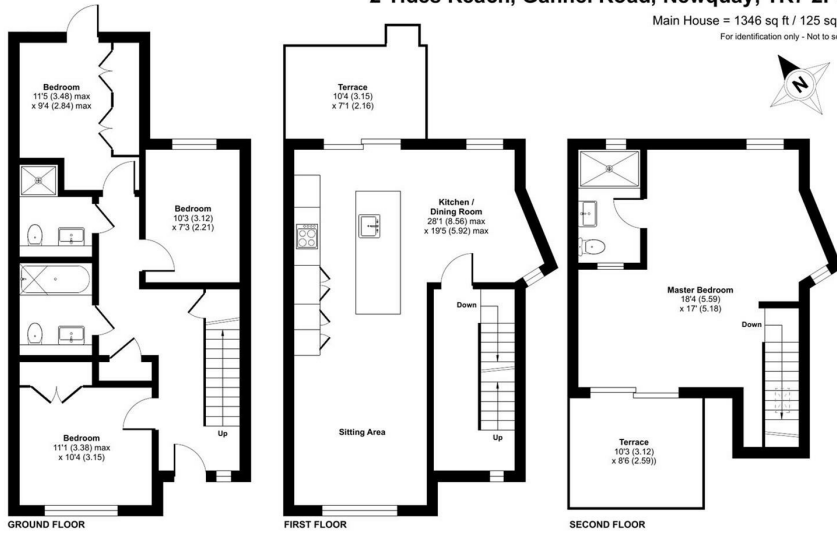
This energy-efficient and contemporary townhouse was completed in 2022 and provides luxurious, modern and immaculately presented accommodation over three storeys. With scenic views over the Gannel and surrounding countryside, high quality and low maintenance combine to create the perfect base from which to enjoy a north coast lifestyle.



SHORE
PARTNERSHIP

Floor Plan

2 Tides Reach, Gannel Road, Newquay, TR7 2FU
 Main House = 1346 sq ft / 125 sq m
 For identification only - Not to scale

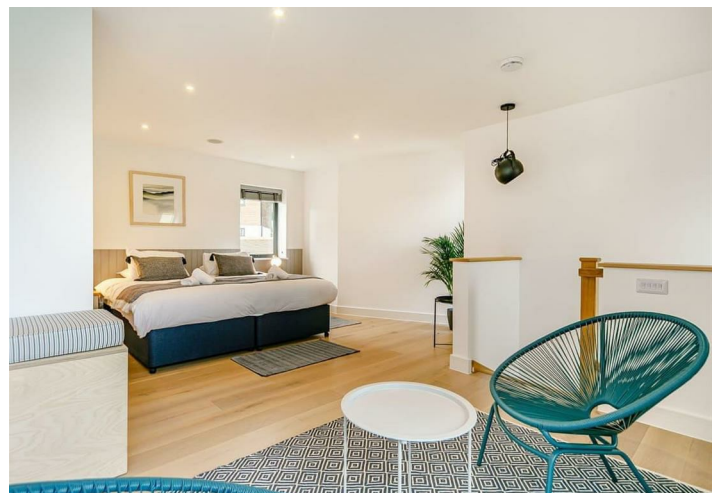
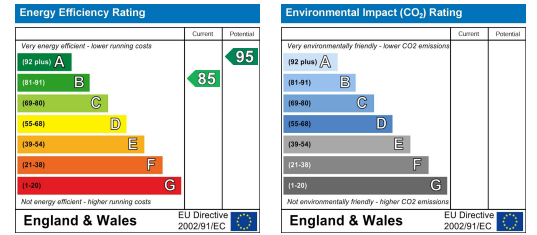


RICS Certified Property Measurer
 Floor plan produced in accordance with RICS Property Measurement Standards incorporating International Property Measurement Standards (IPMS) Residential. ©Richroom 2024. Produced for Shore Partnership Limited. REF: 1106088

Area Map



Energy Efficiency Graph



IMPORTANT NOTICE Shore Partnership, their clients and any joint agents give notice that: 1. They are not authorised to make or give any representations or warranties in relation to the property either here or elsewhere, either on their own behalf or on behalf of their client or otherwise. They assume no responsibility for any statement that may be made in these particulars. These particulars do not form part of any offer or contract and must not be relied upon as statements or representations of fact. 2. Any areas, measurements or distances are approximate. The text, images and plans are for guidance only and are not necessarily comprehensive. It should not be assumed that the property has all necessary planning, building regulation or other consents and Shore Partnership has not tested any services, equipment or facilities. Purchasers must satisfy themselves by inspection or otherwise.