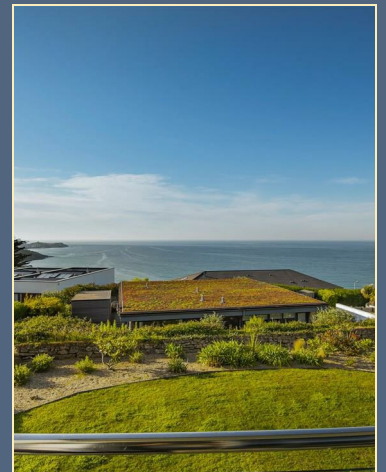




The Sands Porthrepta Road, St. Ives, TR26 2FG

£385,000

A beautifully presented first floor apartment within an exclusive and gated development in Carbis Bay, enjoying fantastic sea views towards St Ives and providing high quality and low maintenance accommodation with a private balcony and allocated parking.

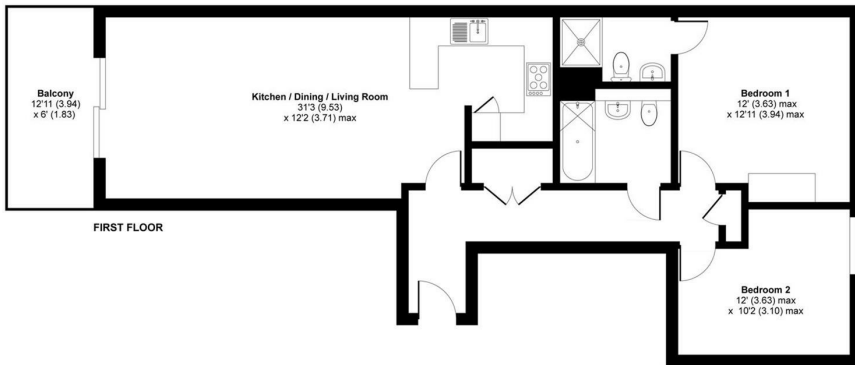


SHORE
PARTNERSHIP

Floor Plan

16 The Sands, Porthrepta Road, Carbis Bay, St. Ives, TR26 2FG

Main House = 866 sq ft / 80 sq m
For identification only - Not to scale

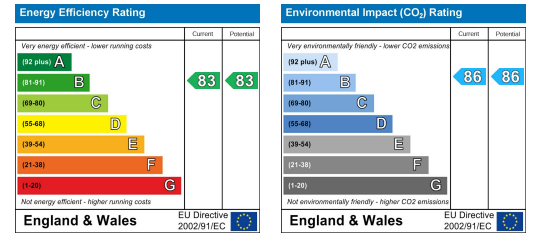


RICS Certified Property Measurer
Floor plan produced in accordance with RICS Property Measurement Standards incorporating International Property Measurement Standards (IPMS Residential). © michcom 2020. Produced for Shore Partnership Limited. REF: 859661

Area Map



Energy Efficiency Graph



IMPORTANT NOTICE Shore Partnership, their clients and any joint agents give notice that: 1. They are not authorised to make or give any representations or warranties in relation to the property either here or elsewhere, either on their own behalf or on behalf of their client or otherwise. They assume no responsibility for any statement that may be made in these particulars. These particulars do not form part of any offer or contract and must not be relied upon as statements or representations of fact. 2. Any areas, measurements or distances are approximate. The text, images and plans are for guidance only and are not necessarily comprehensive. It should not be assumed that the property has all necessary planning, building regulation or other consents and Shore Partnership has not tested any services, equipment or facilities. Purchasers must satisfy themselves by inspection or otherwise.