



# 5, Ocean Walk

Grannys Lane, Perranporth



## 5, Ocean Walk Grannys Lane

Perranporth, TR6 0HB

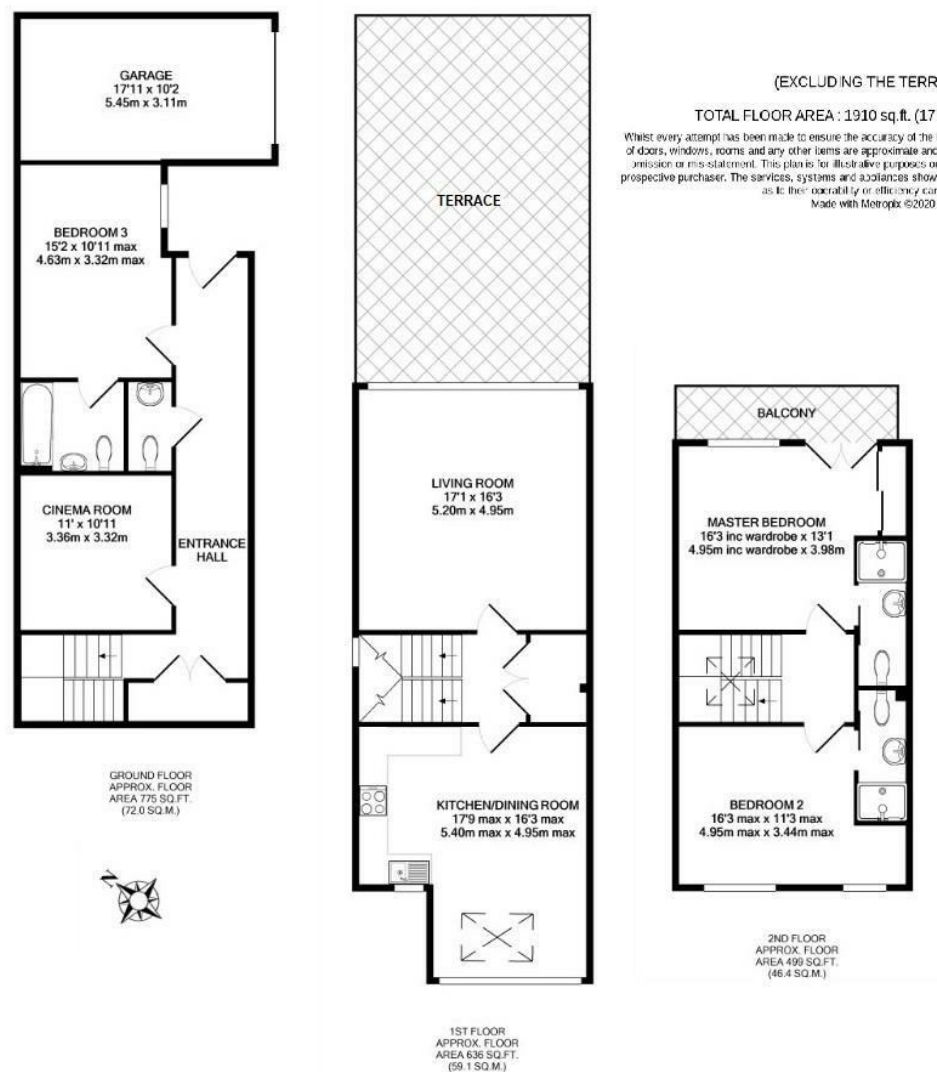
ALL NOW SOLD: One of five superb brand new homes set within a leafy location within a level walk of the beach, seafront and shops. Each high quality property includes generous proportions, en suite bedrooms, two reception rooms, balconies, outside space and parking.

### What our client said

"Ben, Andy and Tim offered a faultless service. Nothing was too much trouble and I received weekly (and often daily!) updates on progress with site sales, feedback and confidence in the market. A local and reliable agent which I class as my 'go to' agents for my current development(s). Ben was always available to discuss, assist and offer an informative opinion on matters when I needed him to. A truly first-class service and I can wholeheartedly recommend Shore Partnership to any purchaser or seller."







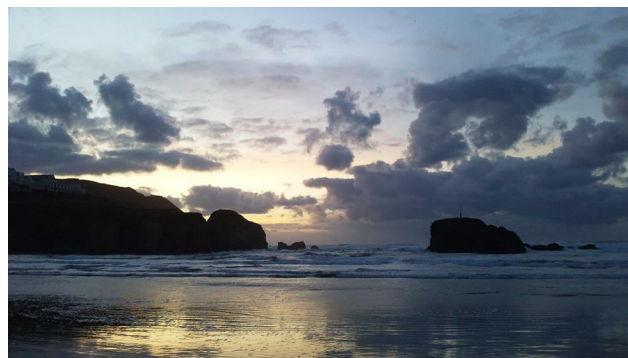
## What the buyer said

"We have had an incredibly positive experience with Shore Partnership. We put an offer on a house in Cornwall just before the second lockdown. Ben, who we've never met but still hope to, managed every aspect of our purchase with amazing efficiency. No question was too much trouble and photographs of building progress were willingly supplied. Considering we only saw the house once from offer to completion, the whole process was handled smoothly and professionally."

## The Location

Ocean Walk is a short level stroll into the centre of the coastal village of Perranporth. The village is well known for its expansive surfing beach, links golf course, coastal walks, and the annual Tunes in the Dunes festival. With acres of beach for dog walking at low tide, while the Surf Life Saving Club is one of the most active in the country. The Watering Hole, a year-round bar, live music venue and restaurant, is located right on the beach.

The village centre also offers a range of day-to-day amenities, including surgery, a butcher, a baker, restaurants, bars, and retail outlets. Within a short distance is Cornwall Airport near Newquay (with four flights a day to Heathrow along with regular flights to Spain and Portugal), the coastal destinations of St Agnes and Porthtowan, and the capital of Cornwall, Truro with its mainline link to London Paddington.





**IMPORTANT NOTICE** Shore Partnership, their clients and any joint agents give notice that: 1. They are not authorised to make or give any representations or warranties in relation to the property either here or elsewhere, either on their own behalf or on behalf of their client or otherwise. They assume no responsibility for any statement that may be made in these particulars. These particulars do not form part of any offer or contract and must not be relied upon as statements or representations of fact. 2. Any areas, measurements or distances are approximate. The text, images and plans are for guidance only and are not necessarily comprehensive. It should not be assumed that the property has all necessary planning, building regulation or other consents and Shore Partnership has not tested any services, equipment or facilities. Purchasers must satisfy themselves by inspection or otherwise.

PROPERTY AGENTS  

---

Where you live matters

[www.shorepartnership.com](http://www.shorepartnership.com)  
[contact@shorepartnership.com](mailto:contact@shorepartnership.com) | 01872 484484